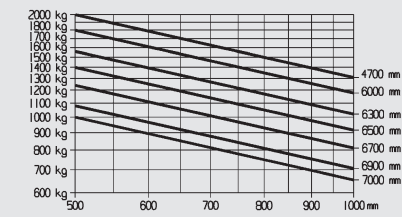
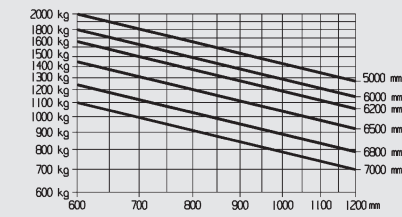


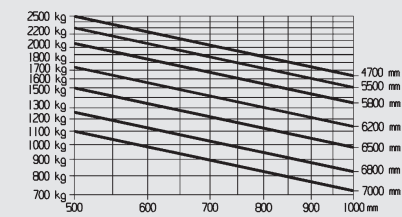
E20



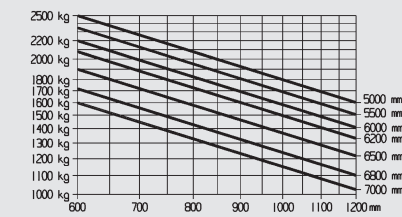
E20/600H



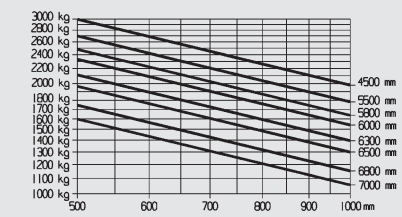
E25/E25L



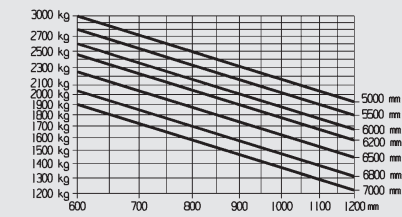
E25/600H, E25/600HL



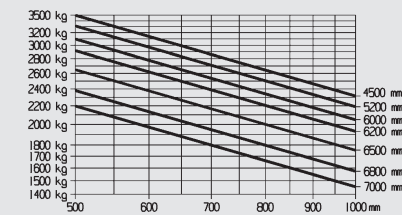
E30/E30L



E30/600H, E30/600HL



E35L/E35HL



Standard Equipment/Optional Equipment

Standard Equipment

- Standard truck height or comfort version
- Hydrostatic power steering
- Linde twin accelerator pedals for all vehicle movements
- Central lever (joystick control) integrated into the adjustable armrest
- 2 x 9 kW maintenance free AC drive motors
- 22 kW AC maintenance free lift motor
- Different ECO modes providing the perfect combination of performance and efficiency
- Graphic display of battery operating time in minutes
- Automatic parking brake
- Linde patented combi axle in all models up to 3.5 t.
- Linde dual motor drive
- Proportional reduction of travel speed when cornering (Linde Drive Assistant)
- Seamless electronic control of all traction and hydraulic movements

Optional Equipment

- Single pedal accelerator with forward/reverse selector in the armrest
- Heating (with pollen protection filter)
- Radio with Bluetooth, USB and SD-card connections
- Fabric covered comfort seat
- Super-comfort seat with air suspension, heater and backrest extension
- Swivelling seat
- Individual or single hydraulic control joystick
- Overhead guard sun blinds (front + top)
- Clipboard with LED illumination
- Front and rear screens, wipers and tops screen
- Full cab with hinged doors
- Polycarbonate top screen on overhead guard
- Tilt cylinder protection
- Alternative fork lengths
- Alternative fork carriage widths
- Integrated sideshift
- Integrated fork spreader

- Standard chassis suitable for working in ISO containers with appropriate mast (not high comfort version)
- Hydraulically cushioned full suspension PVC operator's seat with armrest
- Comprehensive digital instrument display
- Generous storage facilities for writing materials and miscellaneous items
- Superelastic tyres

Mast

- Clearview standard mast
- Fork carriage width: 1,080 mm for E20, E20/600H, E25, E25L
- 1,150 mm for E25/600H, E25/600HL, E30, E30/600 H, E30/600 HL, E30 L, E35 L, E35 HL
- Fork length 1,000 mm

- One, two or three additional hydraulic circuits for attachments
- Load backrest
- Working lamps with LED technology
- Truck lighting with LED technology on rear side
- Full road lighting
- Flashing beacon/rotating beacon
- Audible reversing alarm
- Electrical socket 12 V
- External, internal and panoramic mirror
- Integrated charger unit, optionally with electrolyte circulation
- Active ventilation for battery charging
- Alternative tyre types
- Cold store protection
- Alternative custom paintwork
- Linde Fleet Management (LFM)

Other options available on request



Electric Counterbalanced Trucks
Capacity 2000 - 3500 kg
E 20, E 25, E 30, E 35

Series 387



Safety

The protective overhead guard forms a strong and completely enclosed protective zone providing optimum structural integrity, safety and protection for the operator. The top mounted tilt cylinders provide seamless, smooth control of the tilt movements for excellent load stability in all operating conditions. This unique design also enables slimmer mast profiles to be fitted for outstanding visibility.

Performance

One would expect a high performance truck to have a high performance traction system – and that is exactly what the Linde compact drive axle and lift system delivers. Powerful motors and intelligent electronic control form an impressive power pack to deliver the highest level of productivity.

Comfort

Consistently high levels of performance and efficiency for extended periods are only possible if the operator feels comfortable. The ergonomic layout of all the controls, the adjustability of the armrest and seat, Linde Load Control, and twin accelerator pedals provide the best possible intuitive interface between the truck and the operator.

Reliability

An electric forklift truck depends on reliable electronic systems. The Linde electronic control system provides a high level of reliability because of its dual circuit monitoring system and sealed aluminium housings which provides total protection for the electronics from the ingress of dust and moisture.

Productivity

Effective in operation, efficient in reducing costs: The unique Linde energy management system ensures intelligent and economical consumption of energy. Energy can also be obtained quickly utilising the optional built-in charging unit or one of the four simple and rapid battery changing methods. The result: more uptime and increased productivity.

Features

Linde compact drive axle

- Twin drive design with high performance Linde AC technology
- Optimum energy efficiency
- Maintenance-free oil-bath vane brake
- Automatic parking brake
- Latest DCB-power moduls are mounted on the drive axle - highest efficiency due to very compact conductors to the motors

Linde hydrostatic power steering

- Minimal physical demands on the operator
- Compact ergonomically designed steering wheel
- Linde combi steer axle for outstanding manoeuvrability



Linde twin accelerator control

- Seamless, rapid reversing without repositioning the feet
- Short pedal travel
- Fatigue-free working
- Increased throughput and performance

Linde Load Control

- Small tactile joystick integrated into the adjustable armrest
- Precise and effortless fingertip joystick control of all mast functions
- Safe and highly efficient load handling

Linde Dual Motor Drive

- Two powerful AC drive motors integrated in the front axle
- Infinitely acceleration and variable torque characteristics
- Extremely quiet in operation



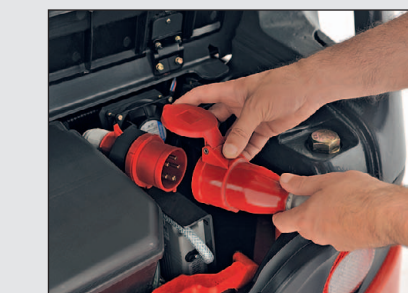
Linde operator's compartment

- Ergonomically designed for efficient, fatigue-free working
- Spacious operator's compartment with generous floor plate area
- Cushioned comfort – mast and drive axle are isolated from the chassis and cab by a unique resilient suspension system that absorbs shock loadings



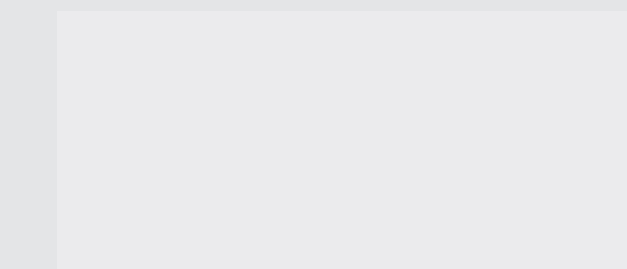
Linde clearview mast design

- With top mounted tilt cylinders for seamless load control and stability
- Excellent view of load and surroundings through the robust yet slim mast profiles
- Nominal capacity retained to high lift heights
- High residual capacities for all applications



Linde energy management

- Optimised energy consumption
- Accurate battery condition indicator
- Simple horizontal or vertical battery changing options
- Optional built-in high frequency charger for convenience and flexibility
- Record of battery usage and condition

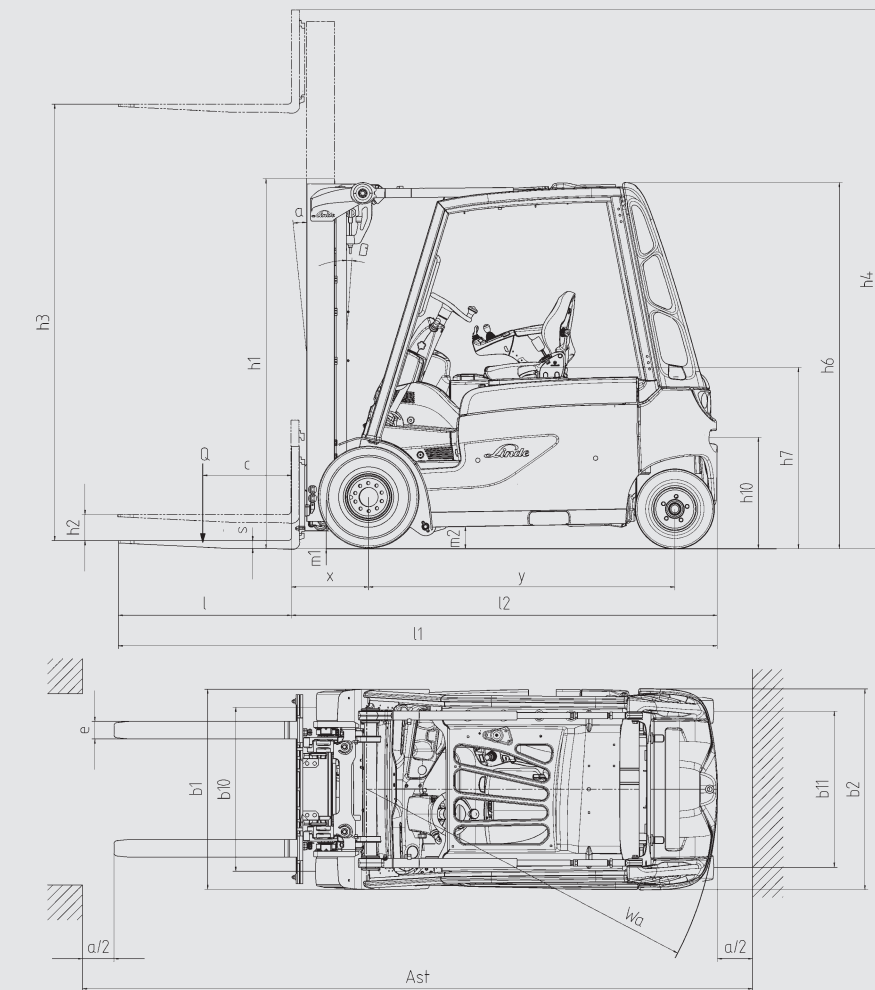


Technical Data according to VDI 2198

Characteristics	Linde														
	E20	E20/600H	E25	E25/600H	E25L	E25/600HL	E30	E30/600H	E30L	E30/600HL	E35L	E35HL	E30/600HL Beverage		
1.1 Manufacturer	LINDE														
1.2 Model designation	E20 E20/600H E25 E25/600H E25L E25/600HL E30 E30/600H E30L E30/600HL E35L E35HL E30/600HL Beverage														
1.2a Series	387-00														
1.3 Power unit	Battery														
1.4 Operation	Seat														
1.5 Load capacity	Q (t)	2.0	2.0	2.5	2.5	2.5	2.5	3.0	3.0	3.0	3.0	3.5	3.5	3.0	
1.6 Load centre	c (mm)	500	600	500	600	500	600	500	600	500	600	500	600	600	
1.8 Axle centre to fork face	x (mm)	445	445	445	468	445	468	471	476	471	476	476	476	476	
1.9 Wheelbase	y (mm)	1622	1651	1622	1651	1767	1796	1665	1651	1767	1796	1810	1796	1796	
2.1 Service weight	(kg)	3968 ¹⁾	4633 ¹⁾	4453 ¹⁾	5138 ¹⁾	4382 ¹⁾	5163 ¹⁾	4981 ¹⁾	5643 ¹⁾	5024 ¹⁾	5521 ¹⁾	5404 ¹⁾	5701 ¹⁾	5808 ¹⁾	
2.2 Axle load with load, front/rear	(kg)	5349 / 619	5650 / 983	6139 / 814	6726 / 912	6148 / 734	6704 / 959	7165 / 816	7649 / 994	7172 / 852	7588 / 933	8078 / 826	8221 / 980	7799 / 1009	
2.3 Axle load without load, front/rear	(kg)	2184 / 1784 ¹⁾	2384 / 2249 ¹⁾	2182 / 2271 ¹⁾	2609 / 2529 ¹⁾	2311 / 2071 ¹⁾	2717 / 2446 ¹⁾	2415 / 2566 ¹⁾	2694 / 2949 ¹⁾	2523 / 2501 ¹⁾	2791 / 2730 ¹⁾	2691 / 2713 ¹⁾	2819 / 2882 ¹⁾	3002 / 2806 ¹⁾	
3.1 Tyres rubber, SE, pneumatic, polyurethane		SE	SE	SE	SE	SE	SE	SE	SE	SE	SE	SE	SE	SE	
3.2 Tyre size, front		225/75-10	225/75-10	225/75-10	225/75-10	225/75-10	225/75-10	225/75-10	250/60-12	225/75-10	250/60-12	315/45-12	315/45-12	315/45-12	
3.3 Tyre size, rear		180/60-10	180/60-10	200/50-10	200/50-10	200/50-10	200/50-10	200/50-10	200/50-10	200/50-10	200/50-10	200/50-10	200/50-10	200/50-10	
3.5 Wheels, number front/rear (x = driven)		2x / 2	2x / 2	2x / 2	2x / 2	2x / 2	2x / 2	2x / 2	2x / 2	2x / 2	2x / 2	2x / 2	2x / 2	2x / 2	
3.6 Track width, front	b10 (mm)	942	942	942	942	942	942	980	942	980	1028	1028	1028	1028	
3.7 Track width, rear	b11 (mm)	900	900	900	900	900	900	886	886	886	886	886	886	886	
4.1 Mast/fork carriage tilt, forward/backward	a/b (°)	5.0 / 8.0	5.0 / 8.0	5.0 / 8.0	5.0 / 8.0	5.0 / 8.0	5.0 / 8.0	5.0 / 8.0	5.0 / 8.0	5.0 / 8.0	5.0 / 8.0	5.0 / 8.0	5.0 / 8.0	5.0 / 7.0	
4.2 Height of mast, lowered	h1 (mm)	2273	2273	2273	2269 ²⁾	2273	2269 ²⁾	2270	2272 ²⁾	2271 ²⁾	2267	2267 ²⁾	2271	2271	
4.3 Free lift	h2 (mm)	150	150	150	150	150	150	150	150	150	150	150	150	150	
4.4 Lift	h3 (mm)	3130	3230	3130	3195 ²⁾	3130	3195 ²⁾	3195	3195 ²⁾	3195	3195 ²⁾	3195	3195 ²⁾	4095	
4.5 Height of mast, extended	h4 (mm)	3793	3893	3793	3956 ²⁾	3793	3956 ²⁾	3957	3959 ²⁾	3956	3958 ²⁾	3954	3954 ²⁾	4858	
4.7 Height of overhead guard (cabin)	h6 (mm)	2080 ³⁾	2237 ³⁾	2080 ³⁾	2237 ³⁾	2080 ³⁾	2237 ³⁾	2080 ³⁾	2237 ³⁾	2080 ³⁾	2237 ³⁾	2080 ³⁾	2237 ³⁾	2667 ³⁾	
4.8 Height of seat/stand on platform	h7 (mm)	1002	1160	1002	1160	1002	1160	1002	1160	1002	1160	1002	1160	1510	
4.12 Towing coupling height	h10 (mm)	621	656	621	658	624	659	623	659	622	661	626	659	659	
4.19 Overall length	l1 (mm)	3318	3352	3318	3375	3463	3520	3444	3383	3539	3528	3594	3528	3535	
4.20 Length to fork face	l2 (mm)	2318	2352	2318	2375	2463	2520	2444	2383	2539	2528	2594	2528	2535	
4.21 Overall width	b1/b2 (mm)	1150 / 1148	1150 / 1146	1150 / 1148	1150 / 1146	1150 / 1148	1150 / 1146	1150 / 1178	1228 / 1146	1150 / 1148	1228 / 1146	1322 / 1178	1322 / 1146	1322 / 1178	
4.22 Fork dimensions	s/e/l (mm)	45 x 100 x 1000	45 x 100 x 1000	45 x 100 x 1000	45 x 100 x 1000	45 x 100 x 1000	45 x 100 x 1000	45 x 100 x 1000	50 x 120 x 1000	45 x 100 x 1000	50 x 120 x 1000	50 x 120 x 1000	50 x 120 x 1000	50 x 120 x 1000	
4.23 Fork carriage to ISO 2328, class/type A, B		2A	2A	2A	2A	2A	2A	3A	3A	3A	3A	3A	3A	3A	
4.24 Width of fork carriage	b3 (mm)	1080	1080	1080	1150	1080	1150	1150	1150	1150	1150	1150	1150	1150	
4.31 Ground clearance, below mast	m1 (mm)	130	130	129	127	130	127	136	136	136	129	129	136	136	
4.32 Ground clearance, centre of wheelbase	m2 (mm)	120	120	120	120	120	120	120	120	120	120	120	120	120	
4.33 Aisle width with pallet 1000 x 1200 across forks	Ast (mm)	3638 ⁴⁾	3672 ⁴⁾	3638 ⁴⁾	3693 ⁴⁾	3783 ⁴⁾	3838 ⁴⁾	3762 ⁴⁾	3700 ⁴⁾	3857 ⁴⁾	3845 ⁴⁾	3911 ⁴⁾	3845 ⁴⁾	3860 ⁴⁾	
4.34 Aisle width with pallet 800 x 1200 along forks	Ast (mm)	3766 ⁴⁾	3800 ⁴⁾	3766 ⁴⁾	3822 ⁴⁾	3911 ⁴⁾	3967 ⁴⁾	3891 ⁴⁾	3830 ⁴⁾	3986 ⁴⁾	3975 ⁴⁾	4041 ⁴⁾	3975 ⁴⁾	3990 ⁴⁾	
4.35 Turning radius	Wa (mm)	1873	1907	1873	1907	2018	2052	1973	2068	2052	2118	2052	2067	2067	
4.36 Minimum pivoting point distance	b13 (mm)	0	0	0	0	0	0	0	0	0	0	0	0	0	
5.1 Travel speed, with/without load	(km/h)	20 / 20	20 / 20	20 / 20	20 / 20	20 / 20	20 / 20	20 / 20	20 / 20	20 / 20	20 / 20	20 / 20	20 / 20	20 / 20	
5.2 Lifting speed, with/without load	(m/s)	0.45 / 0.56	0.45 / 0.56	0.45 / 0.56	0.44 / 0.53	0.45 / 0.56	0.44 / 0.53	0.42 / 0.51	0.42 / 0.51	0.42 / 0.51	0.39 / 0.51	0.39 / 0.51	0.42 / 0.51	0.42 / 0.51	
5.3 Lowering speed, with/without load	(m/s)	0.54 / 0.54	0.54 / 0.54	0.54 / 0.54	0.56 / 0.56	0.54 / 0.54	0.56 / 0.56	0.56 / 0.56	0.56 / 0.56	0.56 / 0.56	0.56 / 0.56	0.56 / 0.56	0.56 / 0.56	0.56 / 0.56	
5.5 Tractive force, with/without load	(N)	4600 / 4600	4600 / 4600	4600 / 4600	4600 / 4600	4600 / 4600	4600 / 4600	4600 / 4600	4600 / 4600	4600 / 4600	4600 / 4600	4600 / 4600	4600 / 4600	4600 / 4600	
5.6 Maximum tractive force, with/without load	(N)	15000 / 15000	15000 / 15000	15000 / 15000	15000 / 15000	15000 / 15000	15000 / 15000	15000 / 15000	15000 / 15000	15000 / 15000	15000 / 15000	15000 / 15000	15000 / 15000	15000 / 15000	
5.7 Climbing ability, with/without load	(%)	8.2 / 12.2	7.5 / 10.6	7.1 / 10.8	6.4 / 9.4	7.2 / 11.2	6.4 / 9.4	6.1 / 9.6	5.8 / 8.7	6.1 / 9.5	5.8 / 8.8	5.5 / 9.0	5.4 / 8.5	5.7 / 8.5	
5.8 Maximum climbing ability, with/without load	(%)	25.4 / 39.0	23.0 / 33.4	21.6 / 34.1	19.7 / 29.3	22.1 / 35.4	19.6 / 29.3	18.7 / 30.0	17.5 / 27.0	17.6 / 27.2	16.8 / 27.8	16.3 / 26.4	17.2 / 26.3	17.2 / 26.3	
5.9 Acceleration time, with/without load	(s)	4.1 / 4.0	4.1 / 4.0	4.1 / 4.0	4.1 / 4.0	4.1 / 4.0	4.2 / 4.0	4.2 / 4.0	4.2 / 4.0	4.2 / 4.0	4.2 / 4.0	4.3 / 4.1	4.3 / 4.1	4.3 / 4.1	
5.10 Service brake		hydr./mech.	hydr./mech.	hydr./mech.	hydr./mech.	hydr./mech.	hydr./mech.	hydr./mech.	hydr./mech.	hydr./mech.	hydr./mech.	hydr./mech.	hydr./mech.	hydr./mech.	
6.1 Drive motor, 60 minute rating	(kW)	2x 9	2x 9	2x 9	2x 9	2x 9	2x 9	2x 9	2x 9	2x 9	2x 9	2x 9	2x 9	2x 9	
6.2 Lift motor, rating at 53/15%	(kW)	22	22	22	22	22	22	22	22	22	22	22	22	22	
6.3 Battery according to DIN 43531/35/36 A,B,C,no		43 535 B	43 535 B	43 535 B	43 535 B	43 535 B	43 535 B	43 535 B	43 535 B	43 535 B	43 535 B	43 535 B	43 535 B	43 535 B	
6.4 Battery voltage/rated capacity (5h)	(V/Ah)	80 / 460-500	80 / 460-620	80 / 460-500	80 / 575-620	80 / 575-625	80 / 575-625	80 / 575-625	80 / 575-625	80 / 575-625	80 / 575-625	80 / 700-775	80 / 700-775	80 / 700-775	
6.5 Battery weight (± 5%)	(kg)	1210	1558	1210	1558	1458	1863	1210	1558	1458	1863	1458	1863	1863	
6.6 Power consumption according to VDI cycle	(kWh/h)	6.4	7	7.4	7.9	7.3	7.9	8.6	8.7	8.6	8.7	9.5	9.8	8.8	
8.1 Type of drive control		Digital/stepless	Digital/stepless	Digital/stepless	Digital/stepless	Digital/stepless	Digital/stepless	Digital/stepless	Digital/stepless	Digital/stepless	Digital/stepless	Digital/stepless	Digital/stepless	Digital/stepless	
8.2 Operating pressure for attachments	(bar)	170	170	170	170	170	170	170	170	170	170	170	170	170	
8.3 Oil flow for attachments	(l/min)	50	50	50	50	50	50	50	50	50	50	50	50	50	
8.4 Noise level at operator's ear	(dB(A))	<65	<65	<65	<65	<65	<65	<65	<65	<65	<65	<65	<65	<65	

1) Figures with battery, see line 6.4/6.5
2) Comfort Version h1/h3/h4 = 2375/3350/4125 mm
3) Comfort Version h6=2160 mm

4) Comfort Version h6=2317 mm
5) Comfort OHG
6) Including a 200 mm (min.) operating aisle clearance.



Mast	Lift	E20/E20* E25/E25* E25L/E25L*		E20/E20* E25/E25* E25L/E25L*		E20/E20* E25/E25* E25L/E25L*		E20/E20* E25/E25* E25L/E25L*		E20/E20* E25/E25* E25L/E25L*		E20/E20* E25/E25* E25L/E25L*		E20/E20* E25/E25* E25L/E25L*		E20/E20* E25/E25* E25L/E25L*		
		E20	E25	E20	E25	E20	E25	E20	E25	E20	E25	E20	E25	E20	E25	E20	E25	
Standard mast	Lift	h3	3130	3230	3430	3730	4030	4530	5030	3095	3195	3495	3695	3995	4495	4995	4095	4495
	Mast retracted	h1	2225	2275	2375	2525	2675	2925	3175	2216	2266	2416	2516	2666	2916	3166	2716	2916
	Mast extended	h4	3795	3895	4095	4395	4695	5195	5695	3853	3953	4253	4453	4753	5253	5753	4853	5253
Duplex mast	Lift	h3	3200	3300	3500	3800	4100	2965	3265	3765	4065	4565	4865	5365	5865	4065	4565	
	Mast retracted	h1	2176	2226	2326	2476	2626	2075	2225	2475	2625	2875	3025	3275	3525	2875	3025	
	Mast extended	h4	3870	3927	4127	4427	4727	3745	4045	4545	4845	5345	5645	6145	6645	4845	5345	
Triplex mast	Lift	h3	4460	4760	4910	5210	5560	6010	6660	4380	4680	4830	4980	5330	5930	6430	5930	6580
	Mast retracted	h1	2075															